



Off Shore Passages

Part 1 – Planning & Preparation

Presented by: Bob Arrington

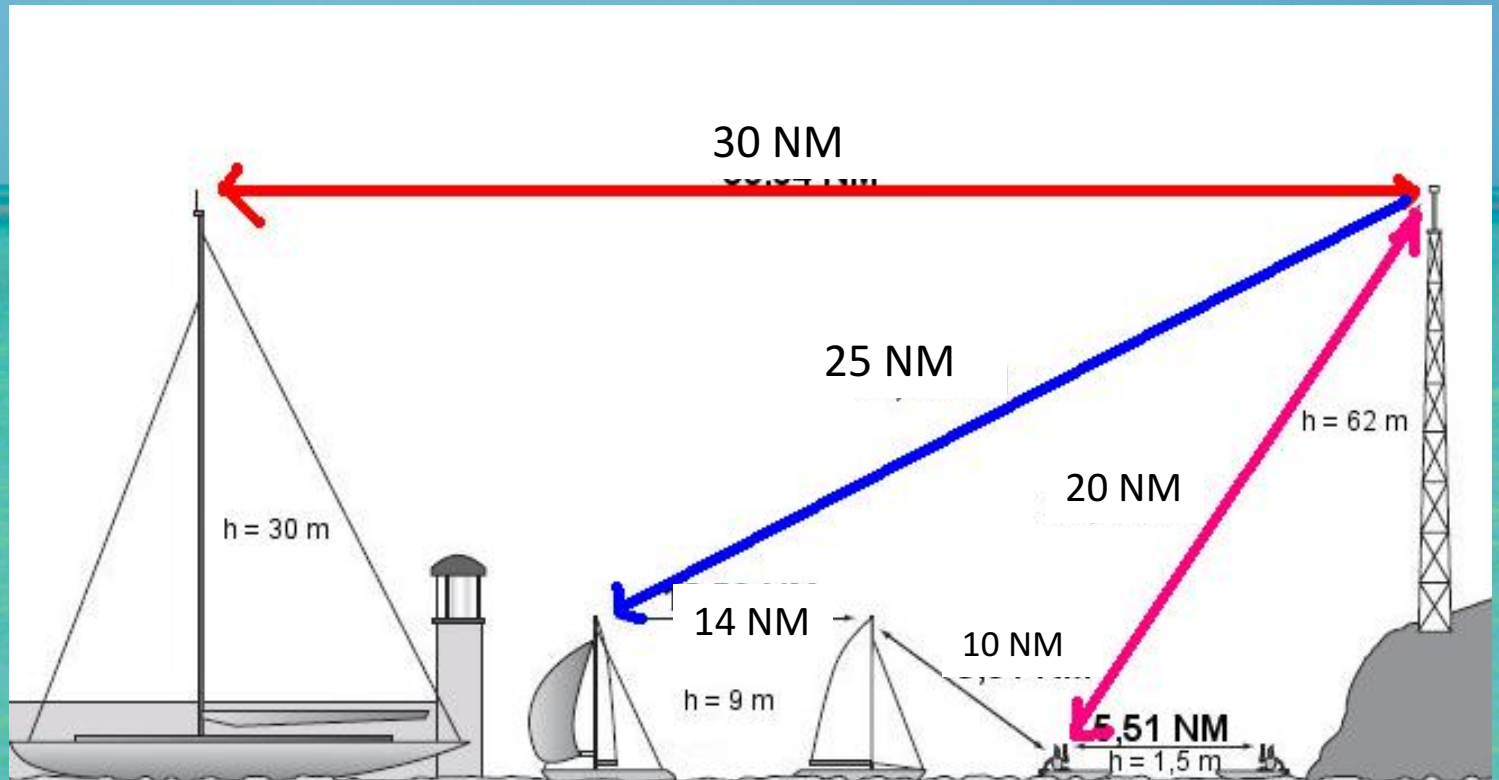
**30th Annual Krogen Cruisers
Chesapeake Rendezvous**

What is an offshore passage?

- Out of site of land ($1.17 \times \sqrt{\text{height of eye}} = \text{distance to horizon in NM}$)
 $1.17 \times 3.6 = 4.2 \text{ NM}$
- Beyond the distance you can travel within a reasonable weather forecast
- Beyond the distance of towing services – 50 nautical mile average

What is an offshore passage?

- Beyond the range of VHF radio (25-30 NM for most trawlers)



What is an offshore passage?

- Life raft manufacturers may use time to rescue as a criteria, if rescue could take more than 24 hours once an EPIRB is activated, than an offshore raft is recommended. Another qualifying factor would be water temperature.



What is an offshore passage?

- Beyond the distance of towing services – 50 nautical mile average
- Many long distance cruisers define true blue water cruising as being beyond the distance of a Coast Guard rescue helicopter – approximately 300 NM



Offshore Passage Planning

- **Vessel capabilities**
- **Maintenance**
 - Develop and rely on systems and procedures
 - Maintenance task list and schedule
 - Maintaining good records, encourages better maintenance
 - Develop the proper state of mind; a commitment and discipline to following procedures
 - Sweat the small stuff – if small items are allowed to go unrepaired, eventually this becomes the theme for the whole boat.
 - Contrary to belief, this does not cost more

Offshore Passage Planning

- **Communications**
 - VHF
 - SSB
 - Satellite – inReach, SPOT, Iridium, GlobalStar
 - Register for GEOS Travel Services
 - EPIRB's & PLB's
- **Fuel Management**
 - Quantity
 - Quality
 - Transfer

Offshore Passage Planning

- **Route planning**
 - Take the trip twice
 - Use local knowledge – tow companies and charter captains
 - Be in the right place at the right time
 - Tides versus currents at points of departure and arrival
 - Plan with conservative average speed
 - Allow for currents along the route
- **Weather**
 - Compare forecasts, NOAA, Buoy Weather, WindFinder, Windy or Specialized marine weather router
 - Learn your boat, along with yours and your crew's tolerances
 - **The most dangerous thing on a cruising boat - is a schedule**

Offshore Passage Planning

- **Traveling in the company of friends**
 - The myths of buddy boating
 - Sharing information
 - Comfort in company
 - Physical support or assistance
- **Review route and plan with shipmates**
- **Float plan & Dedicated Person Ashore (DPA)**
 - Coast Guard APP – email to DPA
 - Notes in EPIRB registration

Offshore Passage Planning

- Notes in EPIRB registration
- www.beaconregistration.noaa.gov

4:56 PM Thu Sep 19

Done Safari - Sep 19, 2019 at 4:49 PM.pdf

EPIRB Information

Deployment Type:	Category II (Manual Deployment)
Vessel Usage:	Non-Commercial
Number of Masts:	
Power Type:	Pleasure Craft, Trawler
Non power Type:	
Vessel Name:	Liberdade
Vessel Color:	White
Federal State Registration Number:	1234573
Vessel Length (ft):	54
Vessel Capacity (Crew and Passengers):	4
Number of Life Boats:	0
Number of Life Rafts:	1
Equipped with a SVDR?:	N
Radio Equipment:	VHF
Radio Call Sign:	WDJ3481
Cellular:	4105988568
MMSI Number:	367768360
INMARSAT:	
Homeport Marina/Dock Name:	River Dunes Marina
Homeport City:	Oriental
Homeport State:	NC
Additional Data:	Transiting U.S. Eastern Seaboard southbound from the Chesapeake Bay to Fort Pierce, Florida between 1 November and 15 December 2019

Emergency Contact Information

Offshore Passage Planning

- **Pre-departure checklists**

1. Engine room check
2. Secure toolbox
3. Turn on electronics
4. Stow all upper deck exterior furniture
5. Collect mats and hoses from the pier
6. Remove E.R. vent covers
7. Put on necessary exterior cushion covers
8. Uncover life raft for open water passages
9. Close & secure gates and lifelines
10. Close all port holes
11. Close sea plates for open water passages
12. Close cabinets & push buttons
13. Turn on Inverter
14. Configure breakers and start generator
15. Turn on ER fans
16. Turn on VHF radios
17. Discuss departure plan
18. Connect headsets
19. Disconnect power cord
20. Start engines
21. Test engine controls
22. Test thrusters
23. Release lines
24. Depart slowly

Offshore Passage Planning

- **Safety Equipment**
 - Life jackets
 - Accessorize
 - Strobe lights
 - Whistles
 - Safety knife
 - AIS Transponder
 - PLB
 - Sized w/name
 - **Don't forget your four legged companions!**



Offshore Passage Planning

- **Life Rafts – Service:**
 - Re-certification 3-5 years
Visit recertification process
 - Hydrostatic release 2 years -
user serviced



Offshore Passage Planning

- Life Rafts – location:



Offshore Passage Planning


- Life Rafts – location:



Offshore Passage Planning

- Life Rafts – location:






**Proper planning promises
pleasant passages**

&

**Bad planning usually ends
badly**

Let's eat lunch!



Off Shore Passages Part 2 – Underway

Presented by: Bob Arrington

**30th Annual Krogen Cruisers
Chesapeake Rendezvous**

Offshore Passage Planning

- **Emergency drills**
 - What do kindergarten teachers and flight attendants have in common?
 - Make it mindless
 - Get over the embarrassment
 - Safety on board the boat is more than having the latest safety equipment, it is a state of mind, a willingness to say “what if”, and an unwillingness to become a statistic

Offshore Passage Planning

- **Safety Equipment**
 - **Ditch Bags**
 - VHF with conventional battery capability
 - EPIRB or PLB
 - Solar charger
 - Inspect batteries regularly
 - Keep past set of expired pyrotechnic signal devices
 - Use SOLAS grade signal devices
 - Lanyards



Offshore Passage Planning

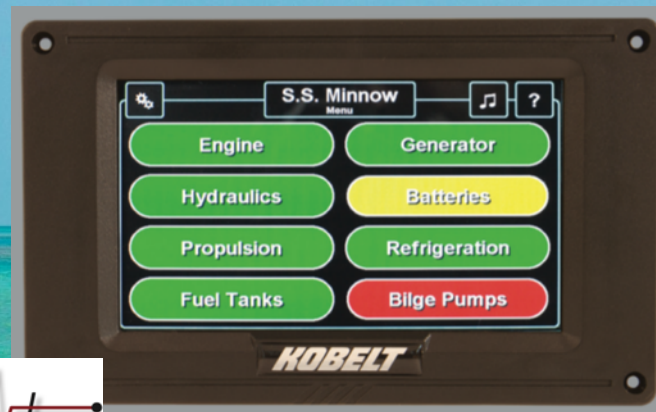
- **Document Bag**
 - Dry bag
 - Ships papers
 - Passports, wallets, etc.
 - Computer hard drives
 - Prescription medicine

Offshore Passage Planning

- **Monitoring vessel status underway**
 - There is a point in the life of every problem, when it is big enough to see, but still small enough to do something about.
- **Most problems are the end result of a sequence of events**
- **Engine room checklists**
- **Bringing engine room information up the the helm**

Offshore Passage Planning

- Monitoring vessel status underway



Offshore Passage Planning

- Besides monitoring vessel data, there is also the issue of identifying alarms

Engine over heating

High water in bilge

Battery temperature

Hydraulic temperature

Engine coolant flow

Navigation Alarms

Engine oil pressure

Hydraulic pressure

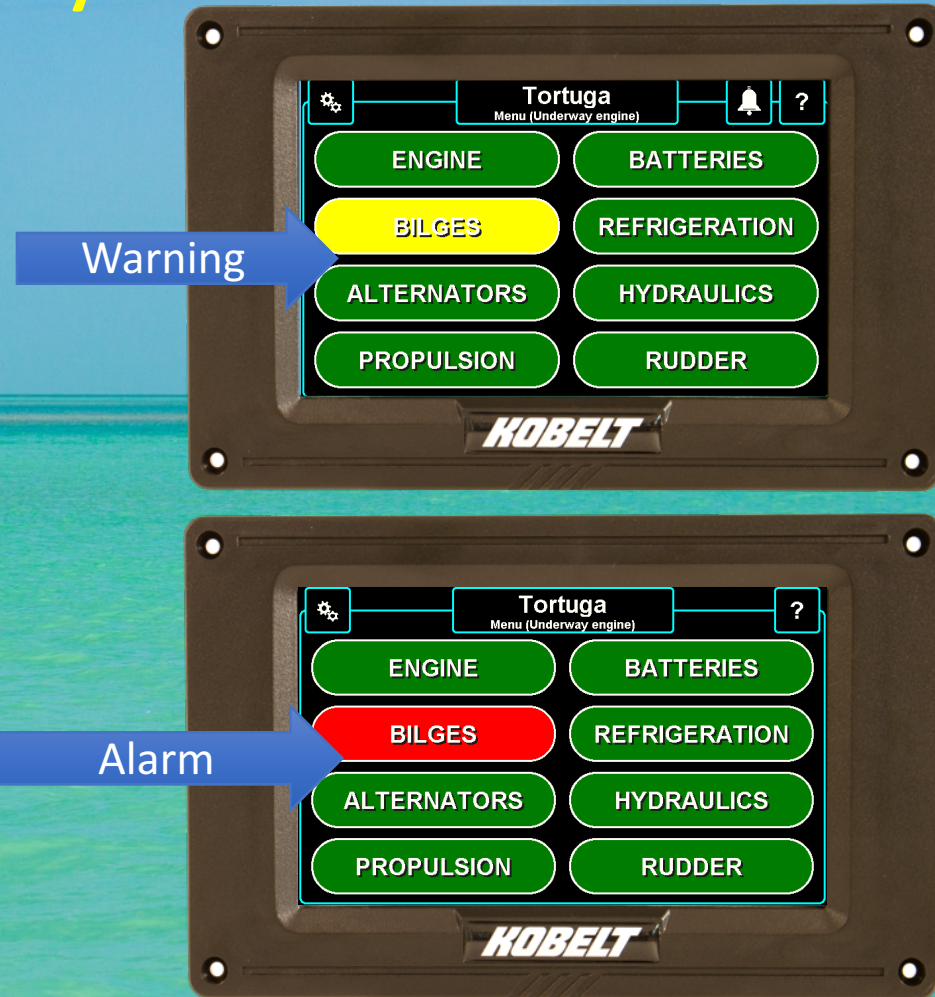
Battery voltage

Autopilot off-course

Generator alarms

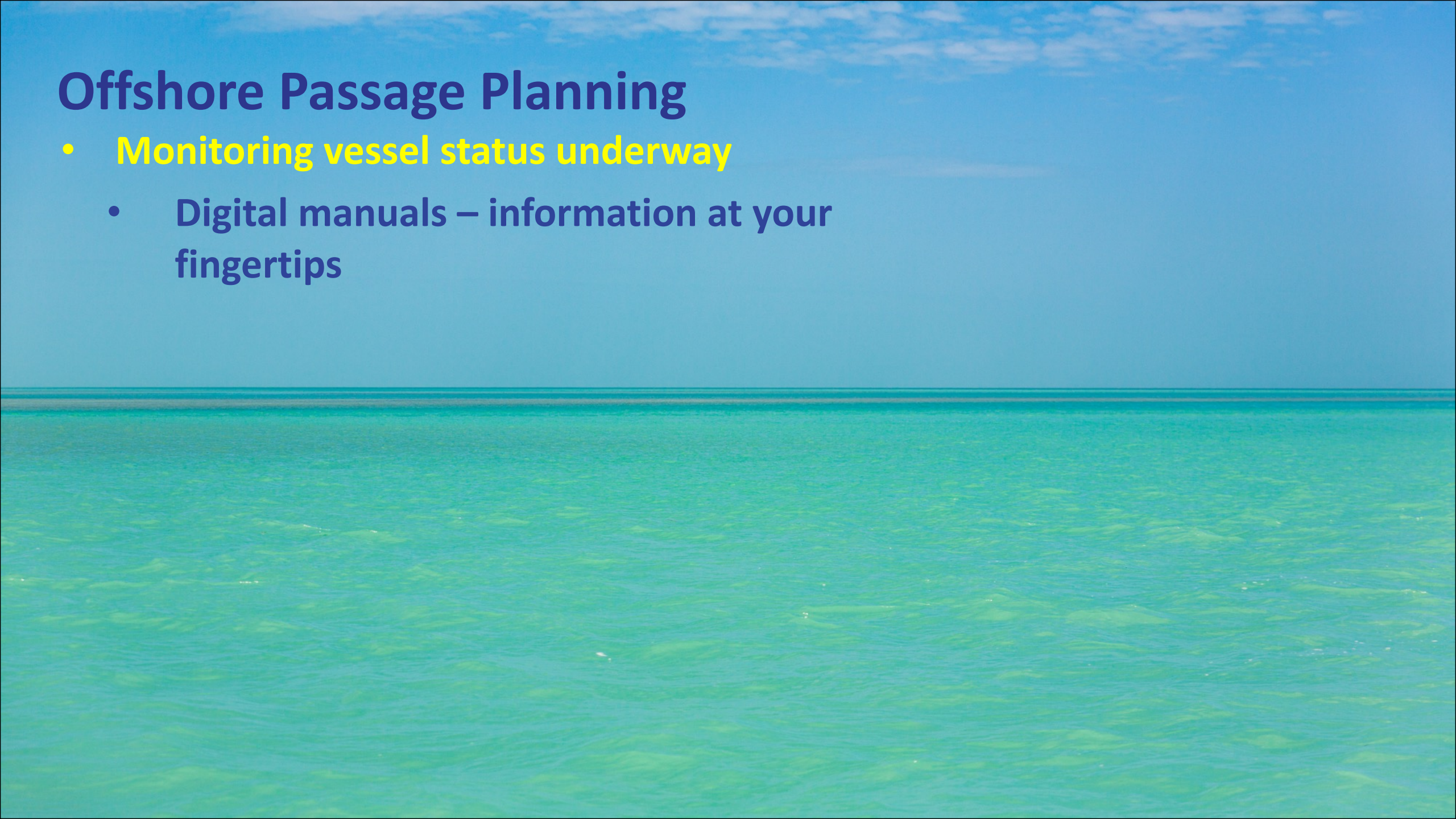
Offshore Passage Planning

- Monitoring vessel status underway
- Ability to customize with warnings and alarms



Offshore Passage Planning

- **Monitoring vessel status underway**
 - Digital manuals – information at your fingertips



Offshore Passage Planning

- **Communication at the helm**
 - My wife and I always have permission to say, honey do you see...
 - Sharing detailed and specific information at helm change
 - Sharing routes on smart devices
 - On overnight passages - strict requirement to wake up in a good mood
 - Logging positions, redundant communications & navigation

Offshore Passage Planning

- **Plan B**
 - Continuing in the face of deteriorating conditions has been the ruin of more than one sea voyage
 - Know your bailout points, be willing to call for assistance
 - Get over the embarrassment of changing plans
 - Be willing to wait
 - Close the trip

The background of the slide is a photograph of a vast, calm ocean. The water is a vibrant turquoise color with gentle ripples on its surface. The horizon line is straight and divides the image into two equal halves. Above the horizon, the sky is a clear, bright blue with a few wispy white clouds near the top edge.

Thank you!